



GLOBAL TEC TRADE SRL

11-2300-3000

SOLA Report

PASS

General information

Filename: Sola006.PDF
Test Date: 02/12/2021
Test Time: 03:53:05
Job ID:
Note:

Customer:
Company:

Module information

Function: SOLA
Module No.: IJ212500106TL39A3
Date: 02/12/2021
Time: 03:54:23

Location

	Location A	Location B
Operator		
Model	View600	
SerialNumber	IJ2125001063	
Calibration date	25/10/2021	
Analysis version	B2.119	

Identification

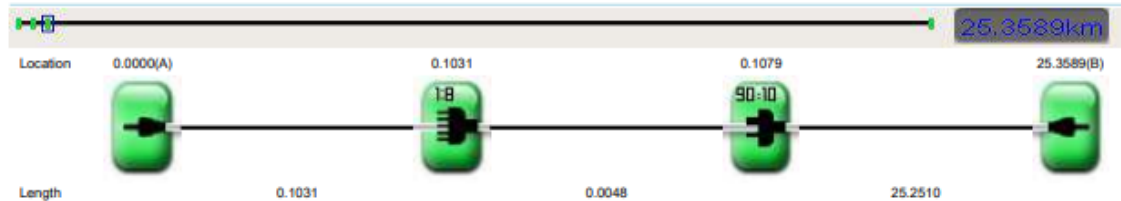
Cable ID	Fiber ID	Location A	Location B	Direction
				A->B

SOLA Result

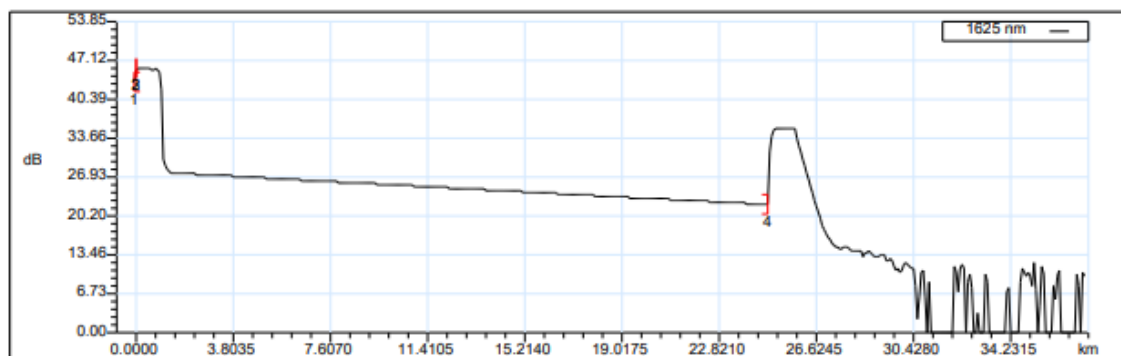
Link length: 25.3589km

Wavelength (nm)	Link Loss (dB)	Link ORL(dB)
1625	26.146	52.60

Link view



OTDR Curve



Superi 4430, CABA (1430)

info@gtt.com.ar

www.gtt.com.ar



GLOBAL TEC TRADE SRL



11-2300-3000

SOLA Report

PASS

Type	NO.	Location(km)	Loss(dB)		Refl.(dB)	
			1625 nm	1625 nm	1625 nm	1625 nm
Connector	S	0.0000(A)	--	--	-56.3	--
Section		0.1031	0.021	--	--	--
Splitter 1:8	1	0.1031	8.680	--	-63.1	--
Section		0.0048	0.001	--	--	--
Splitter 1:2(90:10)	2	0.1079	12.394	--	-57.4	--
Section		25.2510	3.978	--	--	--
Connector	E	25.3589(B)	--	--	-16.0	--

SOLA test pass/failed threshold

	1625	Link Loss(dB)		Max ORL(dB)	Link length(km)	
		Min value	Max value		Min value	Max value
Custom pass/failed threshold	1625	0.000	20.000	15.00	0.0000	80.0000

Custom pass/failed threshold

Threshold (dB)	1625 nm
Max splice loss(dB)	1.000
Maximum connector loss(dB)	--
Maximum connector reflectance(dB)	--
Max splitter reflectance(dB)	-40.0
Max splitter loss 1:2 (90:10)(dB)	1.500:14.000
Max splitter loss 1:8(dB)	12.000

SOLA parameters and settings

Launch fiber:	0.0000 km	IOR(1550 nm):	1.468734
Receive fiber:	0.0000 km	Backscattering(1550 nm):	-82.58 dB
Splitter 1:	1:8	Splitter 2:	1:2 (90:10)
Splitter 3:	None	Splitter 4:	None
Splitter 5:	None		

Superi 4430, CABA (1430)

info@gtt.com.ar

www.gtt.com.ar